

Hitachi ZW220-6

BJ 2017

8605 hours

SN: HFLNEK5ZC00000278

video:

<https://youtu.be/2VvYorm0q0k>

- Bucket inkl.
- weight system
- 149 kW Motor
- 18600 kg





HWH Machines GmbH
Robert-Bosch-Ring 12
75038 Oberderdingen
Telefon +49 7258 9509120
Telefax +49 7258 9509149

Geschäftsführer: Juri Heidt
AG Mannheim | HRB 710828
St.Nr. 30062/65784
UST-IdNr. DE815263690

Volksbank Kraichgau
BLZ 672 922 00
Konto 83159308
BIC GENODE61WIE
IBAN DE82 6729 2200 0083 1593 08

HFLNEK5ZC 000002788

Hitachi Construction Machinery (Europe) N.V.
Sicilieweg 5,1045 AT Amsterdam, The Netherlands

Model/Type	Total Permissible Mass (kg)	Year of Manufacturing
WHEEL LOADER ZW220-6	18600	2017
Homologation Number	Permissible Front Axle Load (kg)	Rated Power (kW)
	8800	149
Product Identification Number	Permissible Rear Axle Load (kg)	CE
HFLNEK5ZC00000278	10200	
HITACHI	Permissible Towable Mass (kg)	Permissible Towable Mass offroad (kg)
This plate may be neither altered nor removed	0	15300



HWH Machines GmbH
Robert-Bosch-Ring 12
75038 Oberderdingen
Telefon +49 7258 9509120
Telefax +49 7258 9509149

Geschäftsführer: Juri Heidt
AG Mannheim | HRB 710828
St.Nr. 30062/65784
UST-IdNr. DE815263690

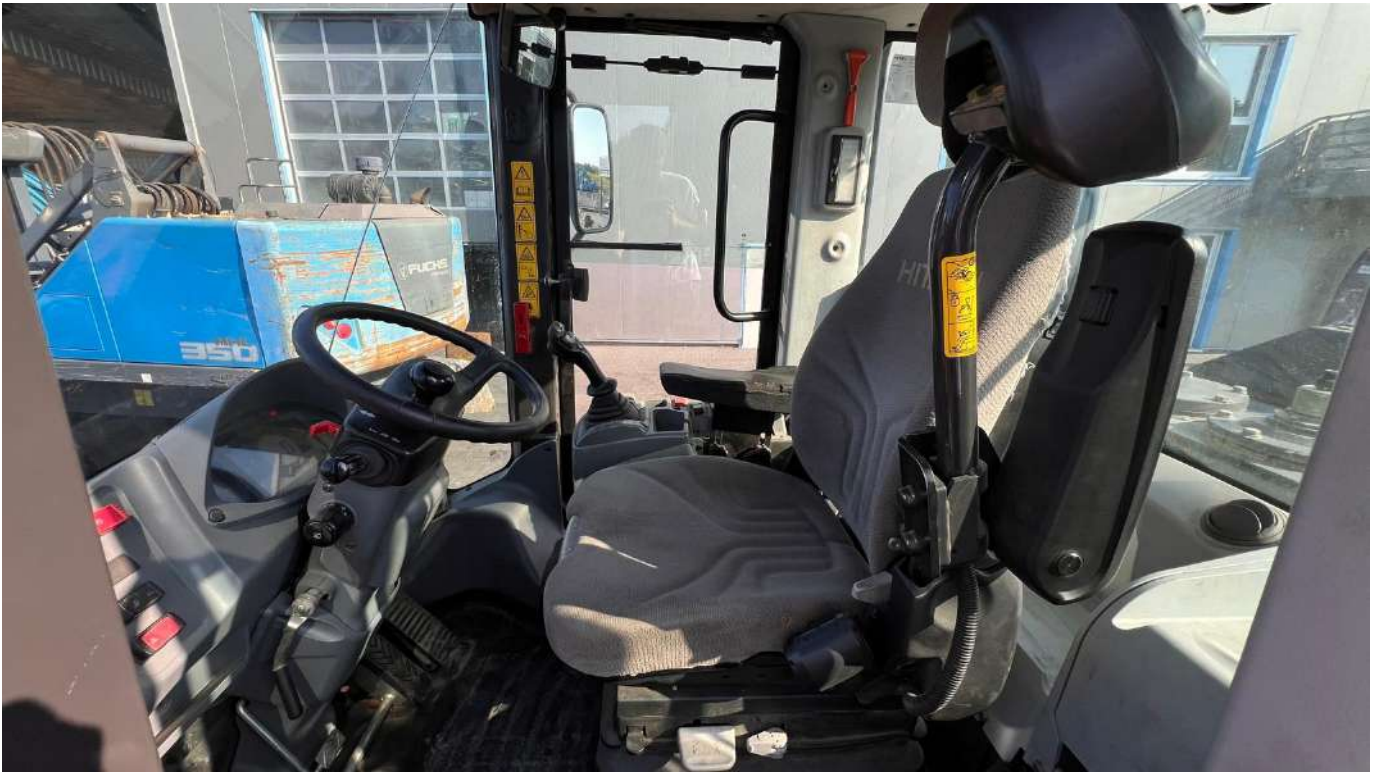
Volksbank Kraichgau
BLZ 672 922 00
Konto 83159308
BIC GENODE61WIE
IBAN DE82 6729 2200 0083 1593 08



HWH Machines GmbH
Robert-Bosch-Ring 12
75038 Oberderdingen
Telefon +49 7258 9509120
Telefax +49 7258 9509149

Geschäftsführer: Juri Heidt
AG Mannheim | HRB 710828
St.Nr. 30062/65784
UST-IdNr. DE815263690

Volksbank Kraichgau
BLZ 672 922 00
Konto 83159308
BIC GENODE61WIE
IBAN DE82 6729 2200 0083 1593 08



HWH Machines GmbH
Robert-Bosch-Ring 12
75038 Oberderdingen
Telefon +49 7258 9509120
Telefax +49 7258 9509149

Geschäftsführer: Juri Heidt
AG Mannheim | HRB 710828
St.Nr. 30062/65784
UST-IdNr. DE815263690

Volksbank Kraichgau
BLZ 672 922 00
Konto 83159308
BIC GENODE61WIE
IBAN DE82 6729 2200 0083 1593 08